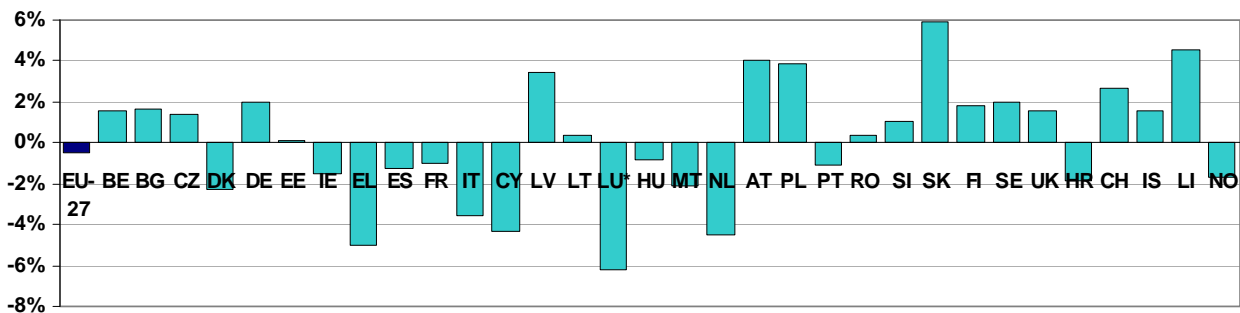


## Europeans keep going on holidays in times of economic slowdown but tend to spend less

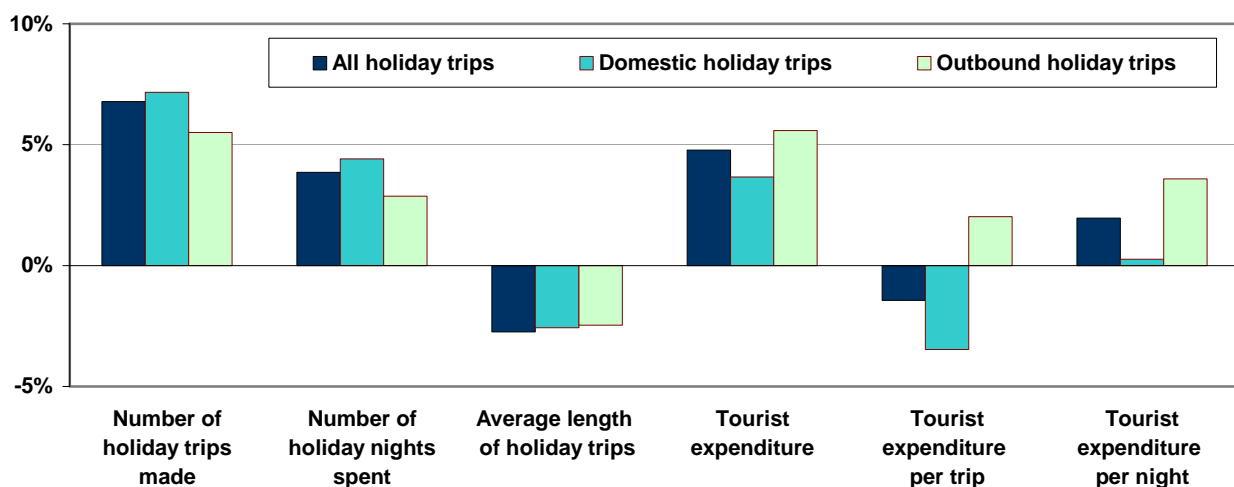
Nights spent at hotels and similar establishments in the EU down by 0.5% in 2008.

**Figure 1: Percentage change in number of nights spent in hotels and similar establishments, 2008 compared with 2007**



\*LU: Estimation based on 9 months data.  
Source: Eurostat ([tour\\_occ\\_nim](#))

**Figure 2: Main evolutions in tourism demand in the European Union, 2007-2008 percentage change, annual data**



Notes: i) Trips, nights spent and average length: EU-27 not including BG, DK, MT, PT, SE, UK ; data based on the first three quarters for CZ, IE, EL and FR. ii) Tourist expenditure: aggregate data based on the 9 Member States for which data for all quarters of 2007 and 2008 is available (BE, DE, ES, IT, LU, NL, AT, SI, FI), this subset of Member States is not necessarily representative for the entire EU-27.

Source: Eurostat ([tour\\_dem\\_tmd](#))

Slight increase in hotel nights by residents (0.3%) partly compensates for the negative growth in hotel nights by non-residents (-1.5%).

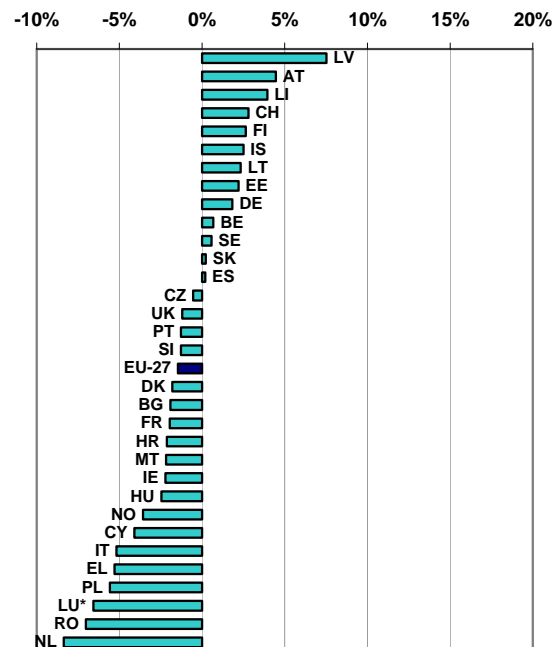
Table 1: Percentage change in number of nights spent in hotels and similar establishments, 2008 compared with 2007

Member State	2008/2007 change (in %)		
	Total	Non-residents	Residents
<b>EU-27</b>	<b>-0.5%</b>	<b>-1.5%</b>	<b>0.3%</b>
BE	1.5%	0.7%	3.3%
BG	1.6%	-1.9%	10.3%
CZ	1.4%	-0.5%	5.2%
DK	-2.2%	-1.8%	-2.6%
DE	2.0%	1.8%	2.0%
EE	0.1%	2.2%	-4.7%
IE	-1.5%	-2.2%	0.0%
EL	-5.0%	-5.3%	-4.2%
ES	-1.2%	0.2%	-3.1%
FR	-1.0%	-2.0%	-0.4%
IT	-3.6%	-5.2%	-2.3%
CY	-4.3%	-4.1%	-7.1%
LV	3.5%	7.5%	-3.9%
LT	0.4%	2.3%	-2.3%
LU*	-6.2%	-6.6%	-0.4%
HU	-0.8%	-2.5%	1.0%
MT	-2.1%	-2.2%	-0.3%
NL	-4.5%	-8.4%	-1.0%
AT	4.0%	4.5%	2.9%
PL	3.8%	-5.6%	8.8%
PT	-1.1%	-1.3%	-0.8%
RO	0.4%	-7.0%	2.0%
SI	1.0%	-1.3%	5.7%
SK	5.9%	0.2%	12.9%
FI	1.8%	2.7%	1.5%
SE	2.0%	0.6%	2.4%
UK	1.6%	-1.2%	3.3%
HR	-1.9%	-2.1%	-0.2%
CH	2.7%	2.8%	2.5%
IS	1.5%	2.5%	-1.7%
LI	4.6%	4.0%	35.6%
NO	-1.7%	-3.6%	-1.0%

\* LU: Estimation based on 9 months data

Source: Eurostat ([tour\\_occ\\_nim](http://tour_occ_nim))

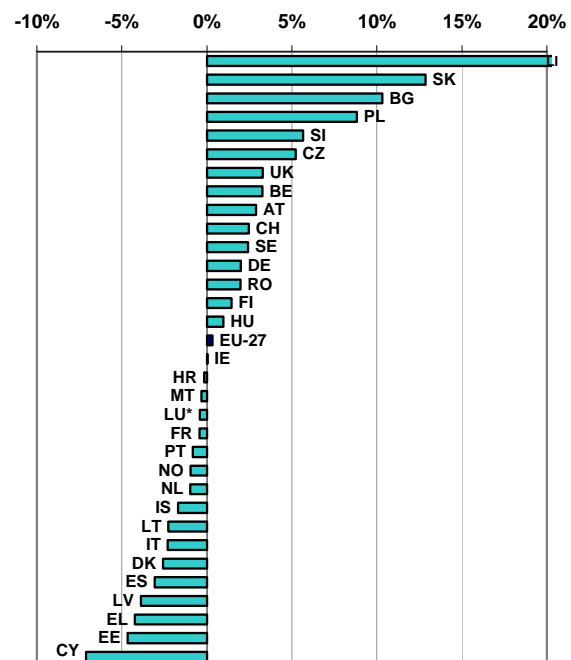
Figure 3: Percentage change in number of nights spent by non-residents in hotels and similar establishments, 2008 compared with 2007



\* LU: Estimation based on 9 months data

Source: Eurostat ([tour\\_occ\\_nim](http://tour_occ_nim))

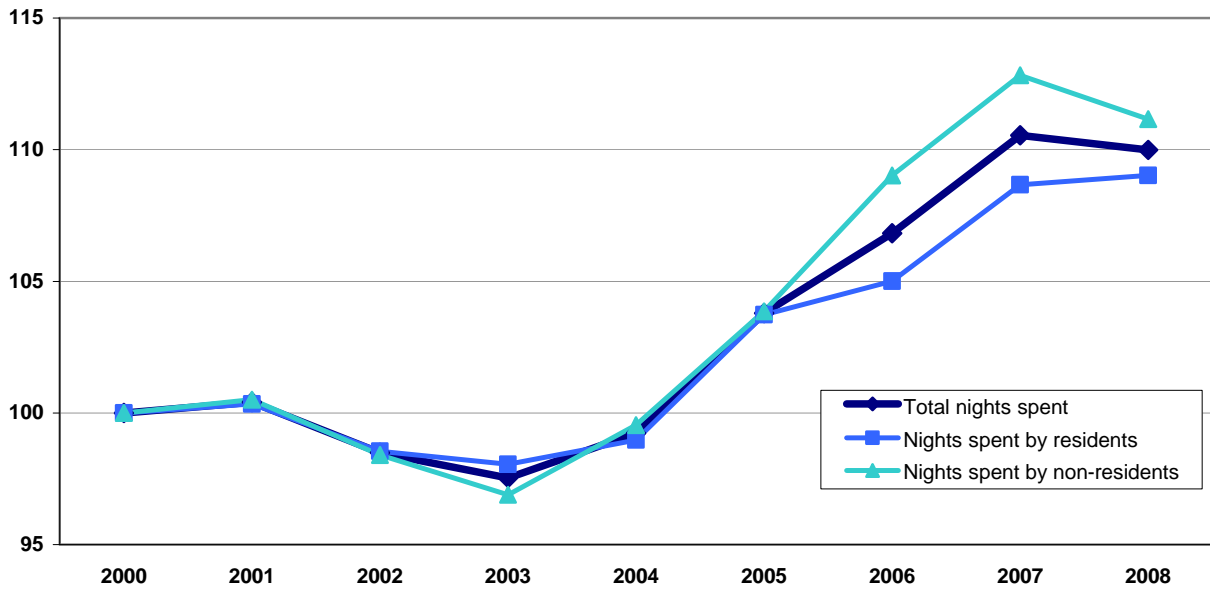
Figure 4: Percentage change in number of nights spent by residents in hotels and similar establishments, 2008 compared with 2007



\* LU: Estimation based on 9 months data

Source: Eurostat ([tour\\_occ\\_nim](http://tour_occ_nim))

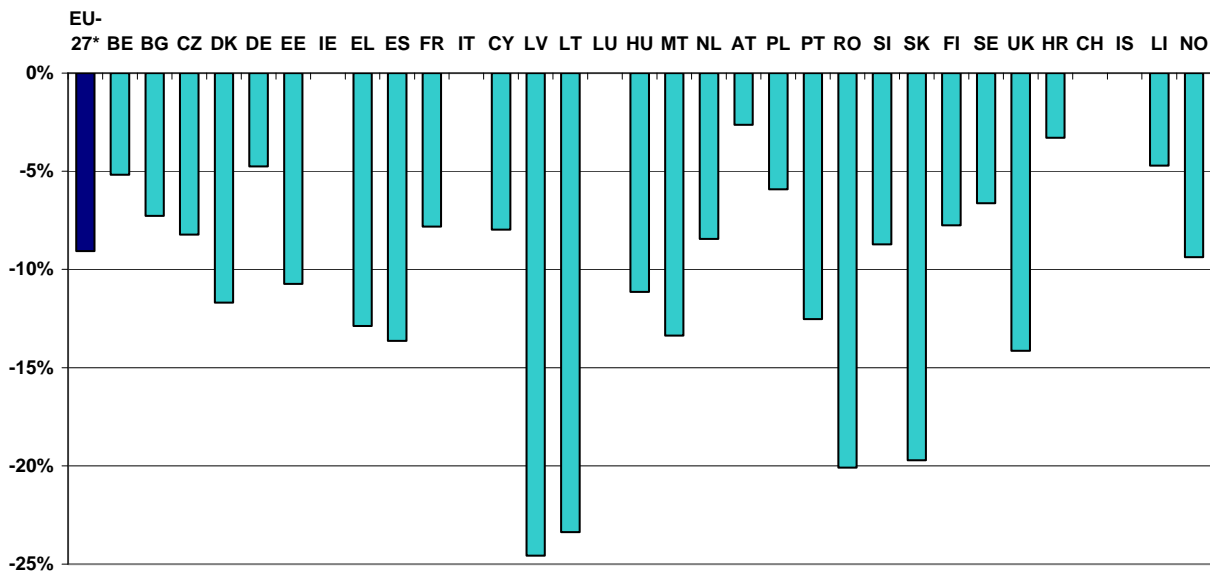
**Figure 5: Evolution of the number of nights spent in hotels and similar establishments, EU-27, 2000-2008 (index: 2000 = 100)**



Source: Eurostat ([tour\\_occ\\_ninat](#))

The first two months of 2009 show a decrease in hotel nights by 9.1%, a fall having been observed in all 27 European countries for which data is available.

**Figure 6: Percentage change in number of nights spent in hotels and similar establishments, January and February 2009 compared with the same period 2008**



\*EU-27 except IE, IT and LU

Note: Not sufficient data available for IE, IT, LU, CH and IS

Source: Eurostat ([tour\\_occ\\_nim](#))

**Table 2: Percentage change in number of nights spent in hotels and similar establishments, first months 2009 compared with the same period 2008**

Member State	Share of Jan-Feb 2008 in total 2008 nights spent	Jan-Feb 2009/2008 change (in %)			Share of Jan-April 2008 in total 2008 nights spent	Jan-Apr 2009/2008 change (in %)		
		Total	Non-residents	Residents		Total	Non-residents	Residents
<b>EU-27*</b>	12%	<b>-9.1%</b>	<b>-11.4%</b>	<b>-7.2%</b>	26%	:	:	:
<b>BE</b>	12%	-5.2%	-8.1%	1.0%	28%	:	:	:
<b>BG</b>	7%	-7.3%	-11.3%	-3.6%	14%	:	:	:
<b>CZ</b>	14%	-8.2%	-14.3%	1.1%	30%	:	:	:
<b>DK</b>	11%	-11.7%	-13.8%	-10.5%	25%	-11.7%	-13.6%	-10.6%
<b>DE</b>	12%	-4.8%	-8.6%	-3.7%	27%	:	:	:
<b>EE</b>	12%	-10.7%	-5.4%	-18.8%	26%	:	:	:
<b>IE</b>	10%	:	:	:	25%	:	:	:
<b>EL</b>	3%	-12.9%	-24.4%	-8.3%	10%	:	:	:
<b>ES</b>	10%	-13.6%	-14.2%	-12.9%	25%	-10.4%	-11.8%	-8.8%
<b>FR</b>	13%	-7.8%	-12.7%	-5.7%	28%	:	:	:
<b>IT</b>	11%	:	:	:	24%	:	:	:
<b>CY</b>	6%	-8.0%	-9.0%	-0.5%	15%	:	:	:
<b>LV</b>	12%	-24.6%	-9.7%	-42.8%	26%	:	:	:
<b>LT</b>	12%	-23.4%	-14.3%	-31.7%	25%	:	:	:
<b>LU</b>	13%	:	:	:	29%	:	:	:
<b>HU</b>	11%	-11.1%	-14.2%	-8.2%	25%	:	:	:
<b>MT</b>	10%	-13.4%	-14.3%	0.6%	25%	:	:	:
<b>NL</b>	13%	-8.4%	-14.2%	-3.3%	29%	:	:	:
<b>AT</b>	23%	-2.6%	-3.4%	0.3%	39%	:	:	:
<b>PL</b>	13%	-5.9%	-17.7%	-1.8%	29%	:	:	:
<b>PT</b>	10%	-12.5%	-18.4%	-0.4%	26%	-11.2%	-14.9%	-3.2%
<b>RO</b>	9%	-20.1%	-23.7%	-19.0%	21%	:	:	:
<b>SI</b>	13%	-8.7%	-14.1%	-0.8%	28%	:	:	:
<b>SK</b>	16%	-19.7%	-33.1%	-0.5%	31%	:	:	:
<b>FI</b>	15%	-7.8%	-11.5%	-5.7%	32%	-8.0%	-14.7%	-5.1%
<b>SE</b>	13%	-6.6%	-11.4%	-5.4%	28%	-4.8%	-6.2%	-4.4%
<b>UK</b>	12%	-14.1%	-14.3%	-14.1%	28%	:	:	:
<b>HR</b>	3%	-3.3%	3.4%	-9.1%	10%	-7.4%	-4.9%	-12.3%
<b>CH</b>	18%	:	:	:	34%	:	:	:
<b>IS</b>	8%	:	:	:	18%	:	:	:
<b>LI</b>	19%	-4.7%	-5.5%	35.2%	35%	:	:	:
<b>NO</b>	14%	-9.4%	-9.6%	-9.3%	29%	-7.2%	-12.2%	-5.7%

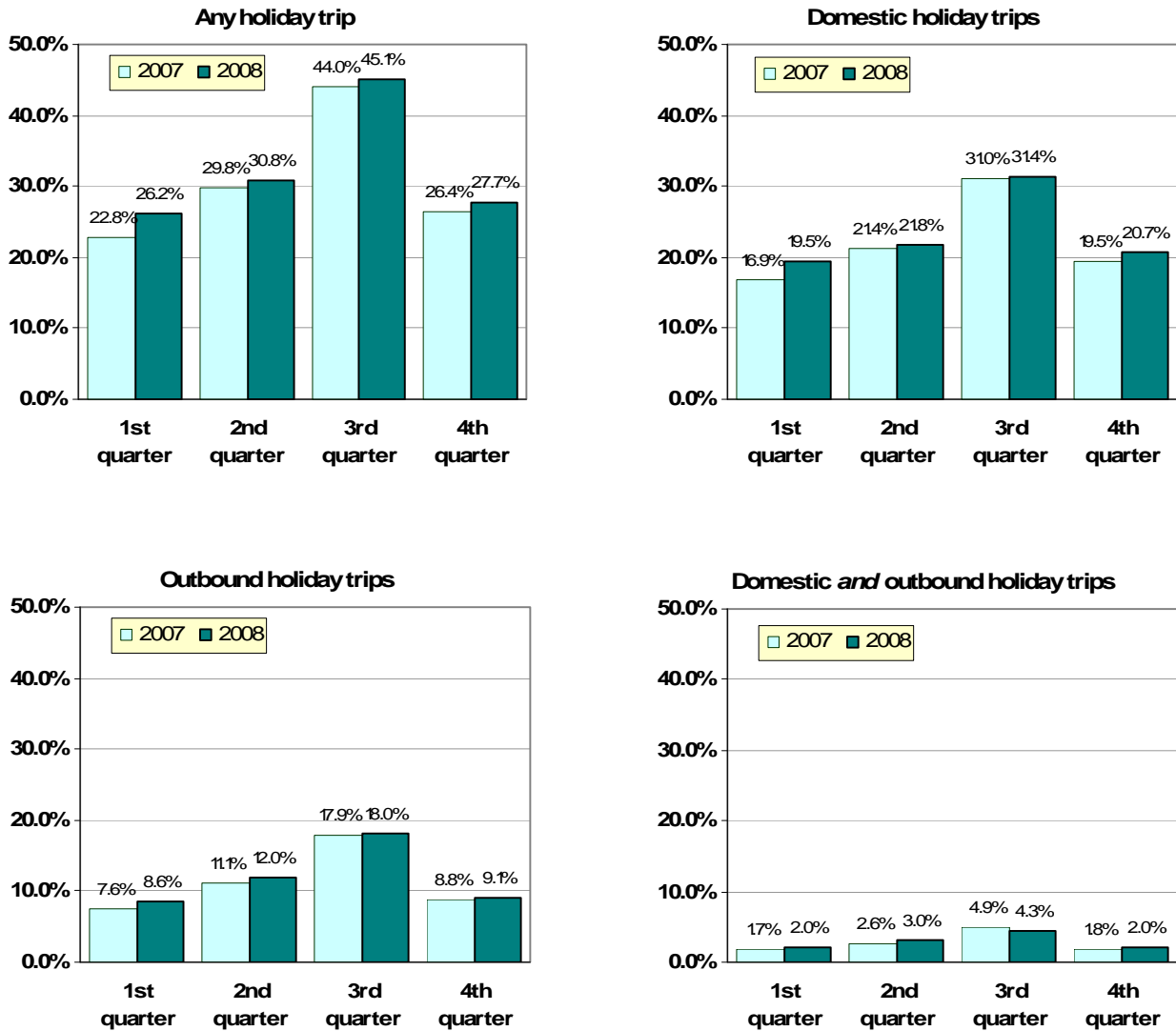
\*EU-27 except IE, IT and LU

*Please note that the evolution in the first two months is not representative for the expected evolution in the entire year. Indeed, in 2008 the months of January and February represented about 12% of the total nights spent during the year, ranging from 3% in Greece or Croatia to 23% in Austria (the shares are added for information in the table).*

Source: Eurostat ([tour\\_occ\\_nim](#))

The participation in tourism - i.e. the share of the population that makes holiday trips during the reference period - grew for domestic trips as well as for outbound trips.

Figure 7: Share of EU residents (aged 15 or over) having made at least one holiday trip during the reference quarter, 2007 and 2008 data, by type of trips



Notes: i) The participation in tourism in each quarter is calculated by dividing the number of persons (aged 15 or over) that made a holiday trip of at least one overnight stay during that quarter by the total population (aged 15 or over); ii) Population data for 2007 was used for all quarters shown in the graphs; iii) EU aggregates based on data for 17 Member States for which data for all quarters is available (BE, DE, EE, ES, IT, CY, LV, LT, LU, HU, NL, AT, PL, RO, SI, SK, FI)

Source: Source: Eurostat ([tour\\_dem\\_tmd](http://tour_dem_tmd))

In the last quarter of 2008, 27.7% of the population made holiday trips, compared to 26.4% in the same period of 2007 ; the share of the population having made a holiday trip of at least 4 overnight stays remained stable in the last quarter at 12%.

**Table 3: Share of the resident population (aged 15 or over) having made at least one holiday trip during the reference quarter, 2007 and 2008 data, broken down by duration of the trip (trips of at least 1 overnight stay ; trips of at least 4 overnight stays)**

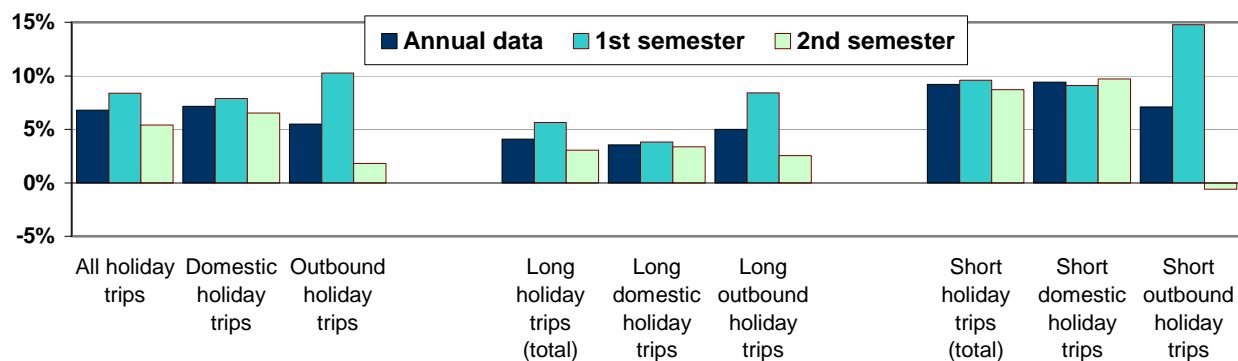
	Share of the population having made at least 1 holiday trip of <i>at least 1 overnight stay</i> (in percentage)								Share of the population having made at least 1 holiday trip of <i>at least 4 overnight stays</i> (in percentage)							
	1st quarter		2nd quarter		3th quarter		4th quarter		1st quarter		2nd quarter		3th quarter		4th quarter	
	2007	2008	2007	2008	2007	2008	2007	2008	2007	2008	2007	2008	2007	2008	2007	2008
<b>EU-27</b>	<b>22.8</b>	<b>26.2</b>	<b>29.8</b>	<b>30.8</b>	<b>44.0</b>	<b>45.1</b>	<b>26.4</b>	<b>27.7</b>	<b>10.0</b>	<b>12.5</b>	<b>15.5</b>	<b>15.1</b>	<b>32.6</b>	<b>32.9</b>	<b>12.0</b>	<b>12.1</b>
<b>BE</b>	16.2	18.9	22.9	23.7	37.5	41.0	14.3	16.4	10.8	12.7	16.8	16.1	33.5	36.7	8.1	10.5
<b>BG</b>	:	8.4	:	8.6	:	20.5	:	13.6	:	3.1	:	3.2	:	15.5	:	5.1
<b>CZ</b>	51.4	41.0	58.6	55.5	82.2	:	44.6	:	15.3	13.8	20.3	23.8	38.5	:	13.8	:
<b>DK</b>	33.8	:	42.1	:	58.0	:	30.1	:	22.6	:	27.7	:	47.9	:	17.9	:
<b>DE</b>	35.8	38.2	46.9	49.5	55.6	58.7	43.1	45.9	13.6	15.4	23.7	23.1	34.7	37.6	19.1	19.5
<b>EE</b>	14.3	15.1	16.6	22.4	27.7	16.0	19.6	17.3	5.1	5.2	6.9	8.6	15.2	8.3	6.0	7.7
<b>IE</b>	57.6	50.1	73.8	53.7	89.8	66.9	64.0	:	25.1	27.5	41.6	35.8	61.1	51.0	30.3	:
<b>EL</b>	13.6	13.8	23.1	19.9	43.9	44.0	18.3	:	5.5	6.6	15.9	12.7	39.3	39.5	11.1	:
<b>ES</b>	17.9	27.5	24.6	23.1	38.8	39.1	23.1	23.4	6.9	15.9	13.3	9.1	31.8	30.5	9.6	8.9
<b>FR</b>	31.9	37.4	42.4	45.2	57.5	62.3	36.0	:	20.0	22.7	27.7	29.3	49.2	52.3	20.7	:
<b>IT</b>	:	:	:	:	:	:	:	:	:	:	:	:	:	:	:	:
<b>CY</b>	11.8	12.2	16.3	16.6	80.5	79.3	14.6	15.1	11.2	11.6	14.3	14.8	49.1	49.3	13.4	13.9
<b>LV</b>	17.3	13.1	21.8	20.5	33.1	32.3	16.0	20.9	3.9	3.3	4.6	5.0	8.7	9.8	4.0	5.3
<b>LT</b>	22.2	23.4	24.5	28.5	37.2	39.6	22.9	24.1	5.3	6.2	7.4	8.3	16.1	19.4	6.5	10.2
<b>LU</b>	39.0	44.6	48.4	48.7	66.3	67.9	41.6	42.9	22.4	23.6	29.8	25.5	45.6	52.4	20.9	25.4
<b>HU</b>	22.3	19.8	28.1	24.4	36.0	33.0	24.5	22.3	3.8	3.4	6.7	6.3	14.7	13.7	3.8	4.2
<b>MT</b>	:	:	:	:	:	:	:	:	:	:	:	:	:	:	:	:
<b>NL</b>	27.3	27.7	43.8	47.3	55.6	55.8	34.2	35.3	16.4	16.7	32.7	37.4	47.8	48.8	21.5	22.0
<b>AT</b>	28.7	29.6	38.1	32.9	53.5	53.6	28.3	31.0	17.0	17.6	24.5	20.7	42.8	42.6	15.6	16.9
<b>PL</b>	10.9	14.1	11.5	16.0	30.0	33.2	14.3	14.6	5.6	6.8	5.1	7.6	24.5	23.1	6.5	6.7
<b>PT</b>	:	:	:	:	:	:	:	:	:	:	:	:	:	:	:	:
<b>RO</b>	7.0	10.4	7.8	11.1	19.5	17.1	12.7	11.3	2.4	4.0	3.5	6.0	15.3	13.1	6.7	5.7
<b>SI</b>	22.0	21.1	22.2	26.9	56.0	50.9	21.8	22.7	9.8	8.9	11.9	13.0	49.4	43.5	9.2	9.4
<b>SK</b>	27.5	25.4	29.4	27.4	48.0	47.8	25.8	26.9	18.7	16.8	22.0	18.3	41.3	40.7	16.7	16.8
<b>FI</b>	55.6	58.3	60.3	60.7	67.8	70.5	56.6	56.1	23.2	27.6	23.6	25.5	35.8	38.9	23.5	21.7
<b>SE</b>	:	:	:	:	:	:	:	:	:	:	:	:	:	:	:	:
<b>UK</b>	23.6	24.8	35.1	36.1	39.7	43.1	31.6	:	11.0	13.0	20.7	21.8	27.8	29.5	15.8	:
<b>HR</b>	17.5	15.8	20.9	21.6	34.9	36.8	16.3	18.2	8.5	7.3	10.7	11.3	29.7	28.9	8.8	8.9
<b>NO</b>	41.4	49.7	52.1	51.5	69.7	72.1	43.9	42.1	21.0	31.0	32.3	28.9	54.7	58.1	24.7	22.6

Notes: i) The participation in tourism in each quarter is calculated by dividing the number of persons (aged 15 or over) that made a holiday trip of at least one overnight stay during that quarter by the total population (aged 15 or over); ii) Population data for 2007 was used for all quarters shown in the graphs; iii) EU aggregates based on data for 17 Member States for which data for all quarters is available (BE, DE, EE, ES, IT, CY, LV, LT, LU, HU, NL, AT, PL, RO, SI, SK, FI).

Source: Source: Eurostat ([tour\\_dem\\_ttmtd](#), [demo\\_ppavg](#))

EU residents made 6.8% more trips in 2008 compared to 2007, the strongest growth was observed for short breaks (9.2%) and domestic trips (7.2%). In the second half of the year, growth was still positive at 5.4%, with a decline for the short holiday trips abroad (-0.6%).

**Figure 8: Percentage change in the number of holiday trips made by EU residents, EU-27, 2008 compared with 2007, annual and intra-annual data**



Notes: Long trips are trips with at least 4 overnight stays, short trips are trips with 1 to 3 overnight stays ; EU-27 not including BG, DK, MT, PT, SE, UK ; data based on the first three quarters for CZ, IE, EL and FR.

Source: Eurostat ([tour\\_dem\\_ttmd](#))

**Table 4: Percentage change in the number of holiday trips made by EU residents, EU-27, 2008 compared with 2007, annual and intra-annual data**

	Number of holiday <i>trips</i> made by EU residents			Number of holiday <i>nights spent</i> by EU residents		
	Annual data	1st semester	2nd semester	Annual data	1st semester	2nd semester
<b>All holiday trips</b>	<b>6.8%</b>	<b>8.4%</b>	<b>5.4%</b>	<b>3.9%</b>	<b>4.2%</b>	<b>3.6%</b>
<b>Domestic holiday trips</b>	<b>7.2%</b>	<b>7.9%</b>	<b>6.5%</b>	<b>4.4%</b>	<b>3.6%</b>	<b>4.9%</b>
<b>Outbound holiday trips</b>	<b>5.5%</b>	<b>10.3%</b>	<b>1.8%</b>	<b>2.9%</b>	<b>5.3%</b>	<b>1.3%</b>
<b>Long holiday trips (total)</b>	<b>4.1%</b>	<b>5.6%</b>	<b>3.1%</b>	<b>3.8%</b>	<b>3.2%</b>	<b>4.1%</b>
Long domestic holiday trips	3.5%	3.8%	3.4%	3.0%	1.2%	3.8%
Long outbound holiday trips	5.0%	8.4%	2.5%	3.3%	5.5%	1.9%
<b>Short holiday trips (total)</b>	<b>9.2%</b>	<b>9.6%</b>	<b>8.7%</b>	<b>4.8%</b>	<b>5.6%</b>	<b>4.0%</b>
Short domestic holiday trips	9.4%	9.1%	9.7%	9.1%	6.2%	12.6%
Short outbound holiday trips	7.1%	14.8%	-0.6%	-1.5%	0.5%	-3.7%

Notes: Long trips are trips with at least 4 overnight stays, short trips are trips with 1 to 3 overnight stays ; EU-27 not including BG, DK, MT, PT, SE, UK ; data based on the first three quarters for CZ, IE, EL and FR.

Source: Eurostat ([tour\\_dem\\_ttmd](#), [tour\\_dem\\_tnmd](#))

Throughout 2008, the number of holiday nights spent increased (3.9%), but at a slower pace than the number of trips, leading to a decrease in average length of the trip by 2.7%.

**Table 5: Evolution of the average length of holiday trips made by EU residents, EU-27, 2008 compared with 2007**

	Average length of holiday trips (in number of nights)			
	2007	2008	Difference	Percentage change
<b>All holiday trips</b>	<b>5.60</b>	<b>5.45</b>	<b>-0.15</b>	<b>-2.7%</b>
Domestic holiday trips	4.64	4.52	-0.12	-2.6%
Outbound holiday trips	8.90	8.68	-0.22	-2.5%

Notes: Average length is calculated by dividing the total number of nights spent by the total number of trips ; long trips are trips with at least 4 overnight stays, short trips are trips with 1 to 3 overnight stays ; EU-27 not including BG, DK, MT, PT, SE, UK ; data based on the first three quarters for CZ, IE, EL and FR.

Source: Eurostat ([tour\\_dem\\_ttmd](#), [tour\\_dem\\_tnmd](#))

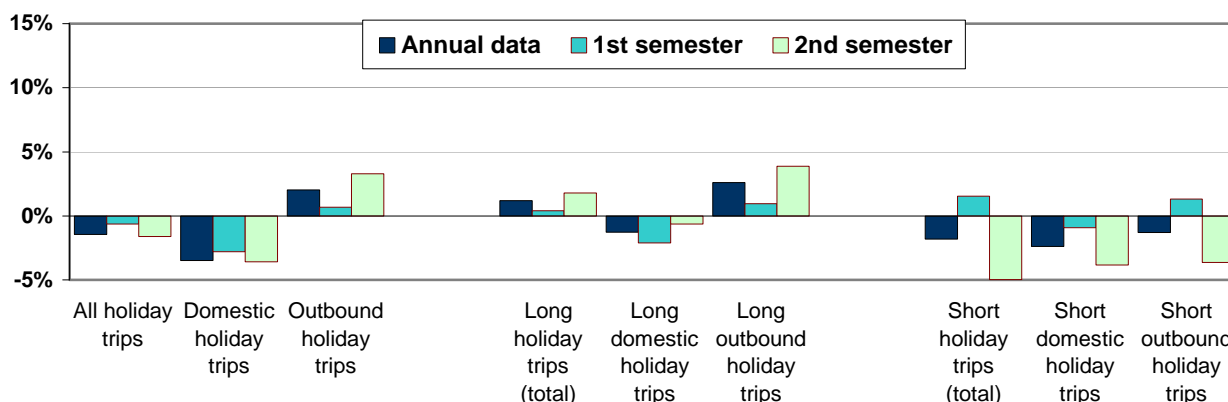
**Table 6: Percentage change in the tourist expenditure by EU residents, aggregate data based on 9 Member States, 2008 compared with 2007, annual and intra-annual data**

	Tourist expenditure by EU residents (aggregate data based on BE, DE, ES, IT, LU, NL, AT, SI, FI)		
	Annual data	1st semester	2nd semester
<b>All holiday trips</b>	<b>4.8%</b>	<b>8.1%</b>	<b>2.6%</b>
<b>Domestic holiday trips</b>	<b>3.7%</b>	<b>5.5%</b>	<b>2.5%</b>
<b>Outbound holiday trips</b>	<b>5.6%</b>	<b>9.8%</b>	<b>2.6%</b>
<b>Long holiday trips (total)</b>	<b>4.2%</b>	<b>6.8%</b>	<b>2.6%</b>
Long domestic holiday trips	1.7%	2.1%	1.6%
Long outbound holiday trips	5.8%	9.6%	3.2%
<b>Short holiday trips (total)</b>	<b>7.0%</b>	<b>11.7%</b>	<b>2.4%</b>
Short domestic holiday trips	6.8%	9.0%	4.6%
Short outbound holiday trips	3.7%	12.1%	-4.2%

Notes: Long trips are trips with at least 4 overnight stays, short trips are trips with 1 to 3 overnight stays ; aggregate data based on the 9 Member States for which data for all quarters of 2007 and 2008 is available (BE, DE, ES, IT, LU, NL, AT, SI, FI), this subset of Member States is not necessarily representative for the entire EU-27.

Source: Eurostat ([tour\\_dem\\_extot](#))

**Figure 9: Percentage change in the average tourist expenditure by EU residents per holiday trip, aggregate data based on 9 Member States, 2008 compared with 2007, annual and intra-annual data**



Notes: Long trips are trips with at least 4 overnight stays, short trips are trips with 1 to 3 overnight stays ; aggregate data based on the 9 Member States for which data for all quarters of 2007 and 2008 is available (BE, DE, ES, IT, LU, NL, AT, SI, FI), this subset of Member States is not necessarily representative for the entire EU-27. Please note that the data is not based on the same set of countries as in the previous Figure 8.

Source: Eurostat ([tour\\_dem\\_extot](#))



Tourist expenditure increased by 4.8% in 2008, but the average expenditure per trip dropped by 1.4%. The shorter average length of holiday trips led to an increase in the expenditure per night (2.0%), given the fact that fixed costs such as transport costs to get to the destination were allocated to fewer days.

**Table 7: Average tourist expenditure by EU residents per holiday trip (and period-to-period percentage change), aggregate data based on 9 Member States, 2008 compared with 2007, annual and intra-annual data**

	Average tourist expenditure <i>per trip</i> (in euro)		Percentage change		
	2007	2008	Annual data	1st semester	2nd semester
<b>All holiday trips</b>	<b>345</b>	<b>340</b>	<b>-1.4%</b>	<b>-0.6%</b>	<b>-1.6%</b>
Domestic holiday trips	198	191	-3.5%	-2.8%	-3.6%
Outbound holiday trips	744	759	2.0%	0.7%	3.3%
<b>Long holiday trips (total)</b>	<b>588</b>	<b>595</b>	<b>1.2%</b>	<b>0.4%</b>	<b>1.8%</b>
Long domestic holiday trips	353	349	-1.3%	-2.1%	-0.6%
Long outbound holiday trips	871	893	2.6%	1.0%	3.9%
<b>Short holiday trips (total)</b>	<b>138</b>	<b>135</b>	<b>-1.8%</b>	<b>1.5%</b>	<b>-5.0%</b>
Short domestic holiday trips	117	114	-2.4%	-0.9%	-3.8%
Short outbound holiday trips	305	301	-1.3%	1.3%	-3.6%

Notes: Long trips are trips with at least 4 overnight stays, short trips are trips with 1 to 3 overnight stays ; aggregate data based on the 9 Member States for which data for all quarters of 2007 and 2008 is available (BE, DE, ES, IT, LU, NL, AT, SI, FI), this subset of Member States is not necessarily representative for the entire EU-27.

Source: Eurostat ([tour\\_dem\\_extot](#))

**Table 8: Average tourist expenditure by EU residents per holiday night (and period-to-period percentage change), aggregate data based on 9 Member States, 2008 compared with 2007, annual and intra-annual data**

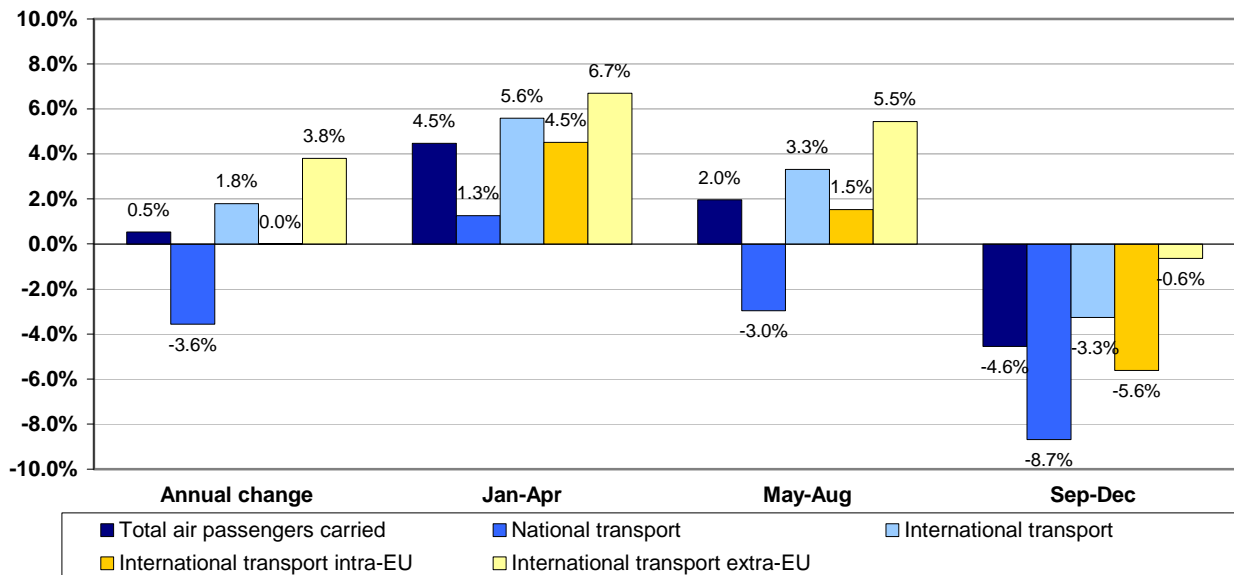
	Average tourist expenditure <i>per night</i> (in euro)		Percentage change		
	2007	2008	Annual data	1st semester	2nd semester
<b>All holiday trips</b>	<b>61</b>	<b>62</b>	<b>2.0%</b>	<b>2.3%</b>	<b>1.5%</b>
Domestic holiday trips	45	45	0.3%	0.4%	0.0%
Outbound holiday trips	83	86	3.6%	3.5%	3.4%
<b>Long holiday trips (total)</b>	<b>59</b>	<b>60</b>	<b>2.6%</b>	<b>2.5%</b>	<b>2.5%</b>
Long domestic holiday trips	38	38	0.3%	0.1%	0.3%
Long outbound holiday trips	80	83	4.0%	3.6%	4.1%
<b>Short holiday trips (total)</b>	<b>70</b>	<b>69</b>	<b>-1.2%</b>	<b>1.6%</b>	<b>-3.8%</b>
Short domestic holiday trips	61	60	-1.6%	-0.8%	-2.5%
Short outbound holiday trips	138	135	-2.0%	1.1%	-4.8%

Notes: Long trips are trips with at least 4 overnight stays, short trips are trips with 1 to 3 overnight stays ; aggregate data based on the 9 Member States for which data for all quarters of 2007 and 2008 is available (BE, DE, ES, IT, LU, NL, AT, SI, FI), this subset of Member States is not necessarily representative for the entire EU-27.

Source: Eurostat ([tour\\_dem\\_extot](#), [tour\\_dem\\_tnmd](#))

Air passenger transport in the European Union grew by 0.5% over the entire year but contracted in all segments - national transport -8.7% and international transport -3.3% - in the last four months of 2008 compared with the same period of 2007.

Figure 10: Percentage change in passenger air transport, aggregate data based on 17 Member States, 2008 compared with 2007, annual and intra-annual data

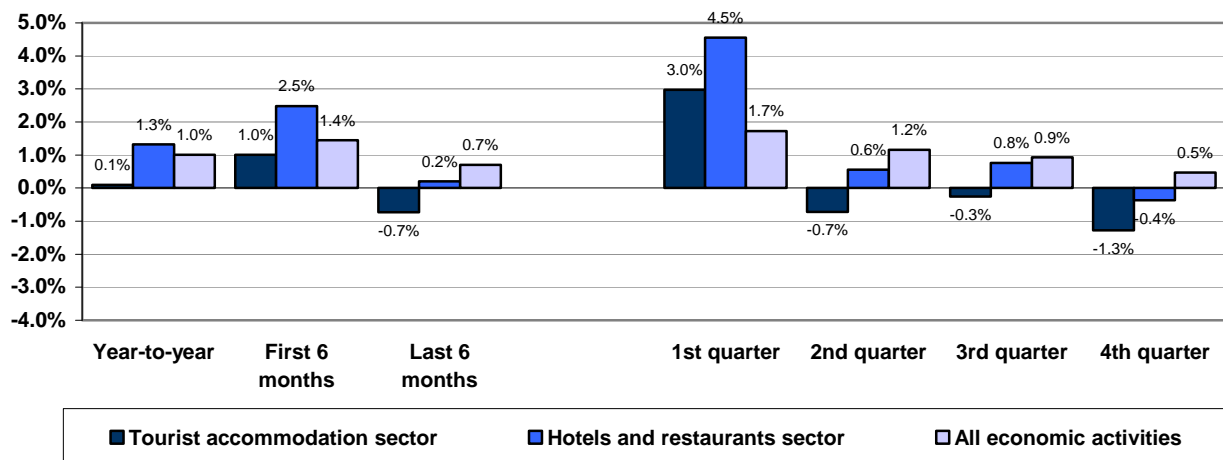


Note: Aggregate data based on 17 Member States for which data is available for all months of 2007 and 2008 (BE, CZ, DE, EE, IE, ES, FR, CY, LV, LU, HU, SI, SK, FI, SE and UK), data for national transport excluding LV, LU, HU and SI.

Source: Eurostat ([avia\\_paoc](#))

Employment in the tourist accommodation sector slightly increased in 2008 (0.1%) but the evolution was less favourable compared to the entire horeca sector (1.3%) or the overall economy (1.0%).

Figure 11: Percentage change in number of persons employed, by economic activity, 2008 compared with 2007, annual and intra-annual data, aggregate based on 18 European countries

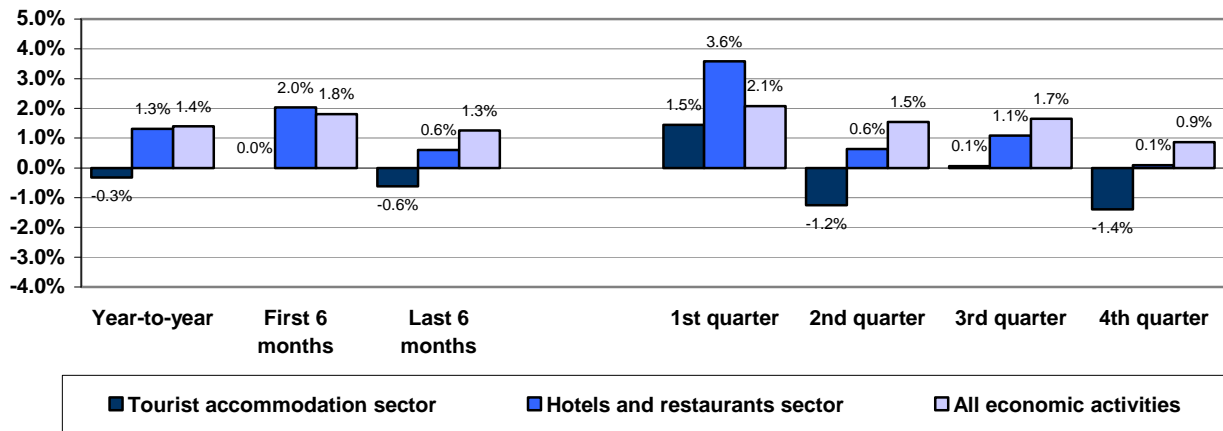


Note: Aggregate based on data from 18 European countries for which data is available for all 4 quarters of 2007 and 2008 (CZ, DK, DE, EL, ES, FR, IT, CY, HU, MT, NL, AT, PT, RO, SK, FI, HR, NO), the 16 EU Member States in this group represent 58% of the EU labour market.

Source: Eurostat ([tour\\_lfs1](#))

The number of employees (i.e. persons employed excluding the self-employed) in the tourist accommodation sector went down by 0.3% in 2008 while full-time employment dropped by 2.3% in the second half of the year.

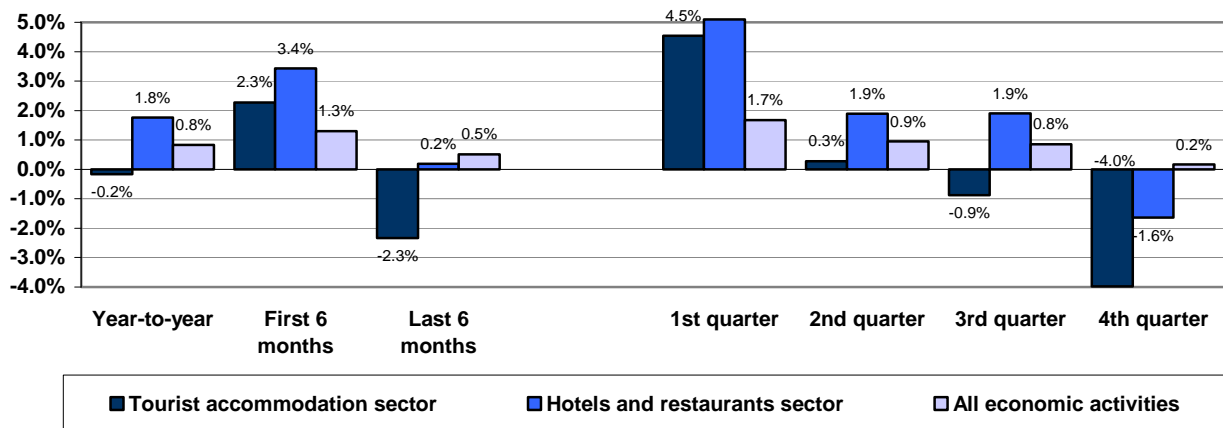
**Figure 12: Percentage change in number of employees, by economic activity, 2008 compared with 2007, annual and intra-annual data, aggregate based on 18 European countries**



Notes: see figure 10.

Source: Eurostat ([tour\\_lfs1](#))

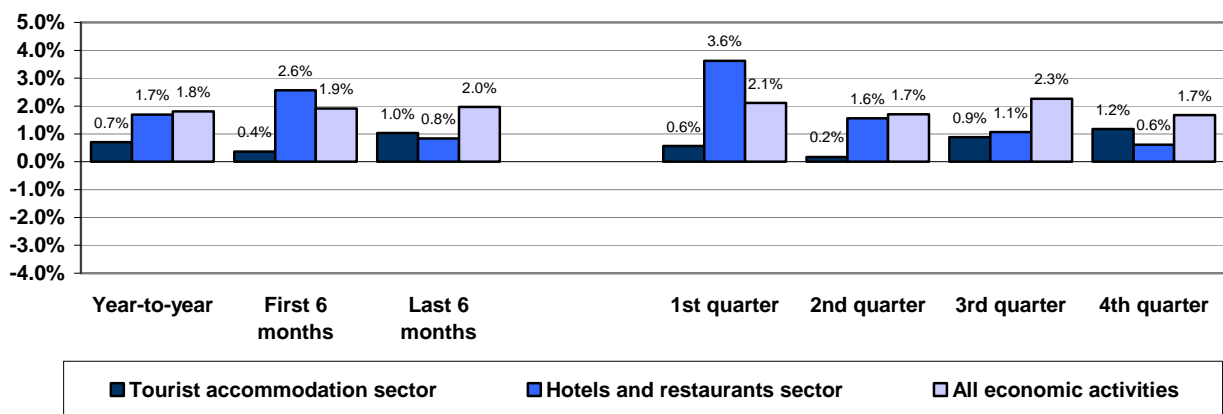
**Figure 13: Percentage change in number of full-time employees, by economic activity, 2008 compared with 2007, annual and intra-annual data, aggregate based on 18 European countries**



Notes: see figure 10

Source: Eurostat ([tour\\_lfs1](#))

**Figure 14: Percentage change in number of employees having a permanent job, by economic activity, 2008 compared with 2007, annual and intra-annual data, aggregate based on 18 European countries**



Notes: see figure 10

Source: Eurostat ([tour\\_lfs4](#))

# Methodology

---

## Symbols & country abbreviations

“.”: no data available or unreliable figures that cannot be published;

BE: Belgium, BG: Bulgaria, CZ: Czech Republic, DK: Denmark, DE: Germany, EE: Estonia, IE: Ireland, EL: Greece, ES: Spain, FR: France, IT: Italy, CY: Cyprus, LV: Latvia, LT: Lithuania, LU: Luxembourg, HU: Hungary, MT: Malta, NL: Netherlands, AT: Austria, PL: Poland, PT: Portugal, RO: Romania, SI: Slovenia, SK: Slovakia, FI: Finland, SE: Sweden, UK: United Kingdom;  
HR: Croatia; CH: Switzerland; IS: Iceland; LI: Liechtenstein; NO: Norway.

## Concepts and definitions

- **Tourism** means the activities of persons travelling to and staying in places outside their usual environment for not more than one consecutive year for leisure, business and other purposes.
- **Hotels and similar establishments** comprise: hotels, apartment hotels, motels, roadside inns, beach hotels, residential clubs and similar establishments providing hotel services including more than daily bed-making and cleaning of the room and sanitary facilities, but also rooming and boarding houses, tourist residence and similar accommodation arranged in rooms and providing limited hotel services including daily bed-making and cleaning of the room and sanitary facilities, as well as guest houses, bed & breakfast and farmhouse accommodation.
- **Tourist expenditure** refers to the consumption expenditure made by a visitor for and during his/her trip and stay at destination. Tourism expenditure encompasses a wide variety of items, ranging from the purchase of consumer goods and services inherent to travel and stays (e.g. accommodation, transport, food and drinks, recreational, cultural and sporting activities) to the purchase of small durable goods for personal use, souvenirs and gifts for family and friends.
- **Air passengers carried:** all passengers on a particular flight counted once only and not repeatedly on each individual stage of that flight. This excludes direct transit passengers who after a short stop continue their journey on the same aircraft on a flight having the same flight number as the flight on which they arrive. See also the Eurostat aviation database on the Eurostat website.

## Further information

---

### European Statistical Data Support:

Contact details for this support network can be found on our Internet site:

<http://ec.europa.eu/eurostat/>

### Data

Data on "Tourism":

<http://epp.eurostat.ec.europa.eu/portal/page/portal/tourism/data/database>

More information about "Tourism":

<http://epp.eurostat.ec.europa.eu/portal/page/portal/tourism/introduction>

---

Manuscript completed on: 09.07.2009

Data extracted on: 22.06.2009

ISSN 1977-0340

Catalogue number: KS-QA-09-024-EN-N

© European Communities, 2009